



# KILN CAR CONTROLLING AND TRACKING

---



Aerial View of Lingl LUK Premises

## LUK – Your Solution Provider

---

LINGL UK is an integral part of the LINGL group of companies, offering reliable, high quality products, workmanship and after sales service to its customers. The company is well known and established within the clay and refractory production industries.

In 1964 Hans Lingl (UK) Ltd. was set up in Congleton, Cheshire to enhance accessibility of Lingl GmbH Co. KG Germany in Great Britain and other English speaking markets.

Since then Lingl UK (LUK) has grown and become a leading company with its own image having established itself as the centre of excellence in the design and manufacture of many key products within the Lingl portfolio.

### LUK – here to help

LINGL meets your demands with LUK in Great Britain. Lingl UK's qualified and co-operative contacts will be able to answer all your questions locally. Additionally Lingl UK can supply you with the complete Lingl product range for the brick industry from its base in Congleton

### LUK – fast 24/7 service – support with team spirit

Choosing a Lingl installation also means choosing first class service. Our latest development gives you access to our service team 24 hours per day, 364 days per year by phone – ready to assist. Think of our service team as an addition to your team. Why not let us produce a customised spare parts package or maintenance schedule for your installation, ensuring utmost production reliability and efficiency!

# Control Station

## Kiln Car Controlling and Tracking Systems

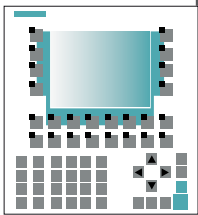
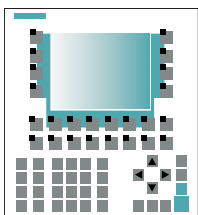
- Control of transfer car with ES 1707 based on OP 177B
- Car tracking system based on a Windows computer system

### Car tracking

- Visualisation and control of the complete kiln car transport
- Operating system
- MSWindows



### ES 1707



### E/A

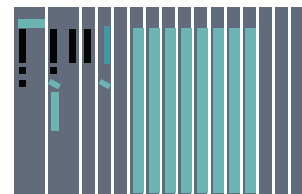


### Profibus DP



### ET 200

### SIMATIC S7



### Ethernet

## ES 1707 with Siemens OP 177B

The operator panel shows the state of the transfer car. The operator can, without delays, obtain a fast overview of the complete track system.

For each transfer car a status picture exists which indicates in clear text, the position of the cylinder and the locking device. This picture displays the types of operation of all drives and their actual values and final positions. It is possible to select fixed preset programmes. Via a free-programmable list it is possible to programme shunting operations by indicating source and destination.

Or alternatively:

Via a free-programmable list it is possible to programme shunting operations by indicating source and destination.

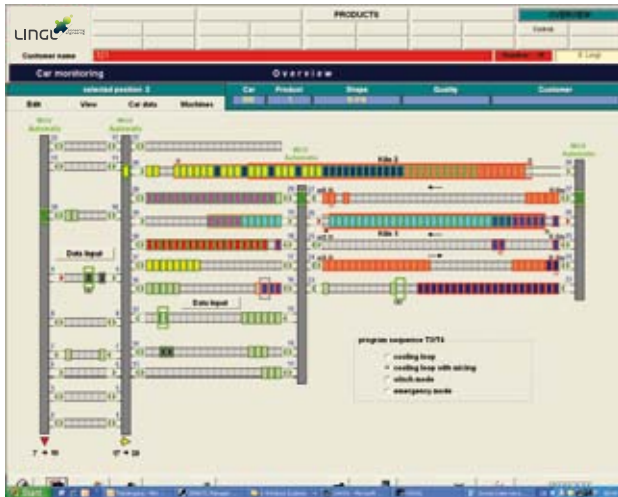
# Car tracking system

There are two types of tracking systems:

- Display of car position (without control of transfer cars)
- Car tracking (with control of transfer cars)

## Display of car position

The display of car position is a pure display of the car transport system. All cars, their state (unfired or fired), the car number, the loaded product (max. 2 products per car) as



## Control of Transfer Cars

In addition to the display of car position the car tracking system also includes the control of the transfer cars, carried out by a fully automatic system which controls the sequence without input by the user. In addition, a list control is implemented which enables the manual control of the production sequence.

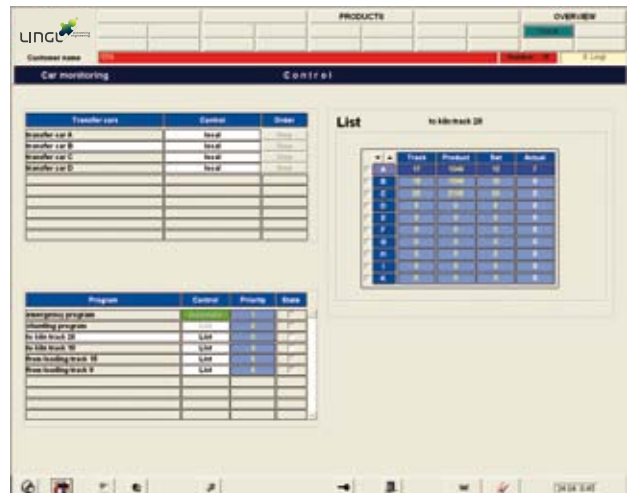
In general various programmes are implemented for each transfer car.

These include, for example, programmes such as –

- take car to kiln track
- collect car from setting track
- take car to unloading station
- collect car from kiln track
- shunting

A priority is assigned to each programme. This means that in case of simultaneous request for several programmes the track with the higher priority is operated first. As a result, products are fed to the kiln (which usually has the highest priority) always in time, avoiding stops at the kiln. If the transfer cars are controlled by the car tracking system, each track can be blocked completely or for certain types of car by the operators. If a track is blocked, for example for accessory products, the trans-

fer car which is controlled by the car tracking system will not feed cars with accessory products to the relevant track. As additional control possibility, the so-called “route plan” exists. The track destination can be programmed for each car in 8 steps. This makes it possible that for example cars for repair can be transferred directly to the repair track without manual intervention of the operator.



# LINGL LUK – YOUR SERVICE PARTNER

In view of our long tradition as a plant engineering manufacturing company we are conscious of our obligation to bring together both innovation and experience. From that we derive our ambition to provide comprehensive services and the very best in service quality.

Machinery and factory systems are becoming increasingly more complex, subjected to be used at full capacity, with systems being pushed to their limits. This increases the demands for a dependable and competent service partner. Today, a service partner is much more than just a spare parts supplier.

LINGL LUK has considered client's needs, enabling it to clearly define its service portfolio to cater for your requirements and is unmatched in the industry.

When experience counts: LINGL LUK – Your Service Partner

The table below outlines all of the services we offer. We offer bespoke, customised services to individual sites and will work alongside each customer to maximise the best value for money.

We will put together training packages to suit your shift patterns and do in house training at your facility using your machines.

Our maintenance packages can be quoted to your specific needs, and detailed reports along with photos supplied on conclusion of work carried out.

We can also assist you with your maintenance planning and give you spare parts quotes for items that are identified as being a potential problems.

Let's work together to improve efficiency, production and longevity of your machinery.

Services		Products				
		Kiln Car Transport	Kiln Car Controlling	Strapping machine	Label applicator	Kiln Car Cleaning
Spare parts Service	Spare and Wearing parts	✓	✓	✓	✓	✓
	Spare Parts Packages	✓	✓	✓	✓	✓
	Repair Processing	✓	✓	✓	✓	✓
Inspection, Maintenance & Repair	Machinery and Equipment	✓	✓	✓	✓	✓
	Maintenance management	✓	✓	✓	✓	✓
Condition Monitoring	Vibration diagnosis	✓	✓	✓	✓	✓
	Compressed Air Leakage Localization	✓	✓	✓	✓	✓
	Remote Service	✓	✓	✓	✓	✓
Plant and Process Optimization	Modernization & Upgrades	✓	✓	✓	✓	✓
	Safety consultation	✓	✓	✓	✓	✓
General Services	Service Agreements & 24 h Service	✓	✓	✓	✓	✓
Training at your facility on your equipment	Siemens S7 Robotics Drives	✓	✓	✓	✓	✓
	Electro / mechanical	✓	✓	✓	✓	✓

### **Managing Director**

Adrian Meacham

mobile: +44 (0) 7540 185556

mail: a.meacham@lingl.com

### **Sales**

Paul Redfern

Product Sales &

Development Manager

mobile: +44 (0) 7766 782108

mail: p.redfern@lingl.com

### **Service**

Kevin Woods

Service Manager

mobile: +44 (0) 7766 782102

mail: k.woods@lingl.com

### **Lingl Solead GmbH**

Radnor Park Industrial Estate

Congleton / Cheshire

England CW12 4UW

phone: +44 (0) 1260 277711

fax: +44 (0) 1260 270926

mail: info@lingl.co.uk

Registered in England and Wales No. 824378

®Registered Office and Trading Address

